

January 22, 2018

# THE COYOTE CONNECTION

## WELCOME BACK

Hope you all had a very happy and restful winter break. It is hard to believe that we will soon be into the month of February. We have jumped right in to the New Year with a very busy start for all grades! With all of the energy in our school we have achieved much in the few weeks we've been back.

**FLU/COLD SEASON** – We have had to send home several students over the past week. Please keep children home if they are sick with a fever, vomiting, diarrhea, or cough to eliminate the spread of this nasty flu. Kukstsemc

## REGISTRATION FOR SCHOOL YEAR 2018/2019

We are now accepting Kindergarten Registration for the next school year.

We are also accepting registrations for grades 1 to 7, where space is available.

When registering, parents will need copies of the child's birth certificate, care card and status card if you live on Tk'emlups te Secwepemc reserve. A new requirement from Independent Schools for off reserve students is proof of residency for parents or legal guardian. A copy of birth certificate or citizenship paper for parents or legal guardian as well as a copy of a utility bill, mortgage document, rental agreement or tax assessment to prove residency in British Columbia.

The Kindergarten class fills up very quickly. As a school of choice, please register early to ensure a spot for your child(ren).

**OUTDOOR CLOTHING** – The school field has been melting very quickly over the last few days. Some children are getting very wet. Please ensure that you send your child with a change of clothes that are marked clearly with their name on.

## TIER 2 BASKETBALL 2018 FOR BOYS AND GIRLS

Basketball season is upon us. Attached, find the Boys and Girls Tier 2 Basket Schedule for 2018. All games will start promptly at 3:00 pm

**Respect - Responsibility - Reliability**

## **RIGLET TRAINING SCHEDULE KINDERGARTEN TO GRADE 3**

On the hill outside the Kindergarten room;

Monday January 22, 22 February 5, 19, 26	11:25 am – 12:25 pm 1:00pm – 2:15 pm	Kindergarten Grade 3
Thursday January 25, February 1, 8, 15, 22	11:25 am – 12:25 pm 1:00pm – 2:15 pm	Grade 1 Grade 2

## **SNOWBOARDING SCHEDULE TO SUN PEAKS GRADES 4 TO 7 Bus leaves sharply at 8:30 am**

Tuesday	January 23, 30, February 6, 13, 27	Grade 4 & 7
Wednesday	January 24, 32, February 7, 14, 28	Grade 5 & 5/6

**LITERACY AFTERNOON** – It was decided to celebrate literacy by participating in an afternoon of literacy activities to allow all students to be able to participate. The Literacy Afternoon will be held on Friday, January 26<sup>th</sup>, with many different literacy activities/stations in the gym allowing students to rotate freely among the stations. Please note that Literacy Night originally scheduled for Tuesday, January 23 has been cancelled.

# **Elder's Corner**

*by Irvine Johnson*

Weytk-p

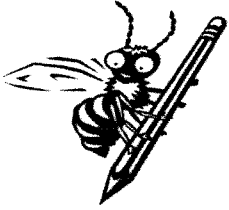
My name is Irvine Johnson and I am originally Esk'et. I had the good fortune to learn Secwepemc from my grandparents and the double fortune to learn from the original linguist Aert Kuipers when the language was first being recorded.

I have taken over from Evelyn Camille as the Language Teacher, who has taken my place as Elder in Residence for the school. My main efforts for the students will be to ensure that they can read and write Secwepemc. There are thousands of Secwepemc words in the Secwepemc dictionary and I know that they cannot memorize them all so it would be most important that they know what the Secwepemc alphabet sounds like so that they can read the words.

It is an enormous task but I believe that the students can learn to read and write the Secwepemc Language. They have certainly demonstrated their eagerness to learn, and many have volunteered to do extra chores in the language room just to hear stories from the team. Much gratitude to Connie Jules and Evelyn Camille.

*Hear with your ears and listen with your heart.*

# **Respect - Responsibility - Reliability**



## **Upcoming Events for February Mark on Your Calendar**

**February 12  
(Monday)**

**Family Day – NO SCHOOL**

**February 23  
(Friday)**

**Non Instructional Day –  
NO SCHOOL**

## **Upcoming Events for March Mark on Your Calendar**

**March 1, 2  
(Thursday)**

**Student Led Conference  
Early Dismissal 11:30**

**March 16**

**Last Day of Class  
Report Cards Home**

**March 19 – 30**

**Spring Break**

**April 3  
(Tuesday)**

**School in session**

**Respect - Responsibility - Reliability**

# Boys Tier 2 Basketball Schedule 2018

Games start at 3:00 p.m.

Tues January 23	Tues January 30	Tues February 6	Tues February 13	Tues February 20
Aberdeen @ Pac Way 1	A.E. Perry @ Aberdeen	A. Hatton @ A.E. Perry	A. Stevenson @ A. Hatton	L. George 1 @ A. Stevenson
Pac Way 2 @ A.E. Perry	Pac Way 1 @ A. Hatton	Westmount @ Aberdeen	Pac Way 1 @ A. E. Perry	Aberdeen @ A. Hatton
Parkcrest @ A. Hatton	A. Stevenson @ Pac Way 2	Pac Way 1 @ L. Lake	Aberdeen @ B. Edwards	Savona @ A. E. Perry
Rayleigh @ Barriere	Parkcrest @ Barriere	Pac Way 2 @ B. Edwards	Pac Way 2 @ Savona	Dufferin @ OLPH 2
B. Edwards @ RLC	Savona @ McGowan	L. George 2 @ Parkcrest	Dufferin @ Barriere	J. R. 1 @ Pac Way 1
Dallas @ Savona	RLC @ Dufferin	J.R. 1 @ Rayleigh	J.R. 1 @ Parkcrest	J.R. 2 @ Pac Way 2
Summit @ S. Sahali	J.R. 2 @ Dallas	J.R. 2 @ RLC	St. Ann's @ Rayleigh	St. Ann's @ Parkcrest
J.R. 1 @ Dufferin	S. Sahali @ J.R. 1	St. Ann's @ Dallas	L. George 1 @ RLC	L. George 2 @ Rayleigh
Westmount @ J.R. 2	B. Edwards @ L. George 1	Dufferin @ S. Sahali	KCS @ L. George 2	Dallas @ RLC
St. Ann's @ OLPH 1	Summit @ Westmount	Savona @ Summit	L. Lake @ S. Sahali	McGowan @ L. Lake
OLPH 2 @ L. George 1	L. George 2 @ OLPH 1	Barriere @ A. Stevenson	McGowan @ Summit	* S. Sahali @ Sk'elep
L. George 2 @ A. Stevenson	OLPH 2 @ L. Lake	OLPH 1 @ McGowan	* Westmount @ Sk'elep	Summit @ KCS
L. Lake @ KCS	KCS @ Rayleigh	* OLPH 2 @ Sk'elep	OLPH 1 @ Dallas	Westmount @ Barriere
* McGowan @ Sk'elep	* Sk'elep @ St. Ann's	KCS @ L. George 1	J.R. 2 @ OLPH 2	OLPH 1 @ B. Edwards

# Girls Tier 2 Basketball Schedule 2018

Games start at 3:00 p.m.

Thurs January 25	Thurs February 1	Thurs February 8	Thurs February 15	Mon February 19
Aberdeen @ Parkcrest	S. Sahali @ Parkcrest	A. Hatton @ L. George	A. Hatton @ A. Stevenson	D. Thompson @ A. Hatton
Rayleigh @ A. Hatton	Dallas @ Rayleigh	A. Stevenson @ Aberdeen	Dallas @ K. Bingham	Aberdeen @ Juniper
RLC @ A. Stevenson	St. Ann's @ RLC	Juniper @ Parkcrest	D. Thompson @ Parkcrest	Parkcrest @ K. Bingham
Westmount @ Dallas	D. Thompson @ A. Hatton	St. Ann's @ Rayleigh	Aberdeen @ Rayleigh	Dallas @ L. George
D. Thompson @ OLPH	Westmount @ K. Bingham	S. Sahali @ K. Bingham	L. George @ RLC	A. Stevenson @ Rayleigh
Juniper @ K. Bingham	Juniper @ OLPH	D. Thompson @ Westmount	* Skelep @ S. Sahali	RLC @ KCS
St. Ann's @ KCS	A. Stevenson @ L. George	* OLPH @ Skelep	Juniper @ Westmount	St. Ann's @ S. Sahali
* L. George @ Skelep	* KCS @ Skelep	Dallas @ KCS	St. Ann's @ OLPH	OLPH @ Westmount
Logan Lake @ S. Sahali	Aberdeen @ Logan Lake	RLC @ Logan Lake	KCS @ Logan Lake	* Logan Lake @ Skelep

\*\*\* Girls Games Scheduled for Week of February 19 - 23 are all moved up to Monday February 19 as

there is a two day Pro D this week \*\*\*

\*\*\* Changes to Tier 2 Girls Schedule with Addition of Logan Lake \*\*\*